

Beosound Level

User Guide

Betjeningsvejledning

Bedienungsanleitung

Guía del usuario

Mode d'emploi

Guida utente

ユーザーガイド

사용 설명서

Gebruikershandleiding

Guia do utilizador

Руководство пользователя

Användarhandbok

用戶指南

使用者指南

DOWNLOAD BANG & OLUFSEN APP



To set up your product, download the Bang & Olufsen App from the Google Play Store or Apple App Store. From this app you can set up and get the most out of your Beosound Level.

When you first start the Bang & Olufsen App, you will be asked to create a user account.

To set up your speaker, click to add a new product. If you already have an account this can be found under settings.

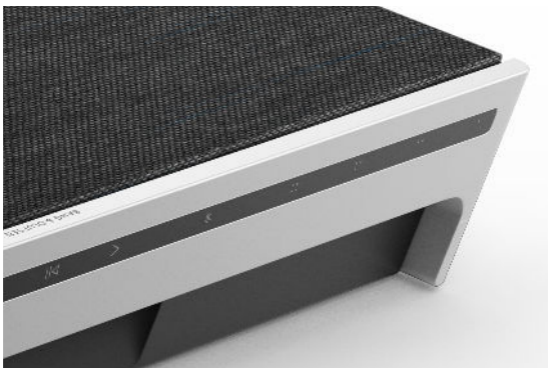
DAILY USE



The touch surface on top of your Beosound Level will light up when you approach, ready for you to control your music.

- ▶ Tap to play or pause
- < > Tap on the arrows to switch tracks or your My Stations
- + Swipe along the line, tap the plus and minus buttons, or tap the dots to control volume
- ✳ Tap the Bluetooth button to switch it on or off
- ⏻ You can turn your Beosound Level on and off using the power button.

FAVOURITES



Beosound Level has four favourite buttons, where you can save your favourite listening experiences or preferred Google commands for easy access.

GOOGLE VOICE

To save a favourite command, like “play some music” or “what’s the latest news?”, long press your chosen favourite button and speak the command.

Access your favourite command anytime with a short press of the button.

RADIO

On your product page, head down to Radio and then Search to pick a station.

Tap the More icon to assign it to a favourite.

Press the favourite button the next time you want to hear the station quickly.

SPOTIFY CONNECT

Use Spotify Connect on the Spotify music streaming app to connect to your Beosound Level.

Play a favourite radio station or playlist, like “Jazz” or your “Discover Weekly” to the speaker via Spotify Connect and long press your chosen favourite button to assign it.

Access your favourite again anytime with a short press of the button.

ORIENTATION



When you move Beosound Level, it will automatically detect its new orientation and provide optimal sound experience for any placement.



Laying down



Standing up



Hanging on the wall

MULTIROOM



Connect your favourite music app to your Beosound Level using Apple AirPlay 2, Chromecast or Bluetooth and play wirelessly.

Use Airplay 2 or Chromecast to seamlessly connect your different wireless speakers into one system, allowing you to control speakers in tandem or individually.

Long press the Bluetooth key to enable or cancel Bluetooth pairing.

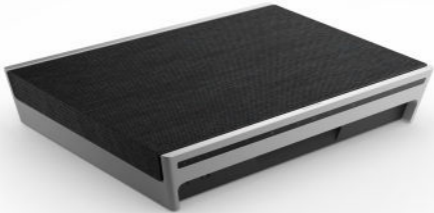
CHARGING



Connect the USB-C charging cable to the adaptor and magnetic aluminium plug.

Place the aluminium plug in the socket on the back of your Beosound Level to power on and charge.

BATTERY LIFE



Beosound Level has up to 16 hours of playtime on battery power at moderate listening.

The battery indicator flashes orange when charging and turns green when the battery is fully charged.

The battery indicator will turn orange for 5 minutes at 40% battery level to give an early warning.

At 20% battery level the battery indicator will turn red and a sound prompt is heard.

At 10% battery level the indicator will be flashing red.

MICROPHONE



To disconnect your microphones rather than temporarily mute them, toggle the microphone switch at the top of the speaker near the power button.

CONNECTIONS

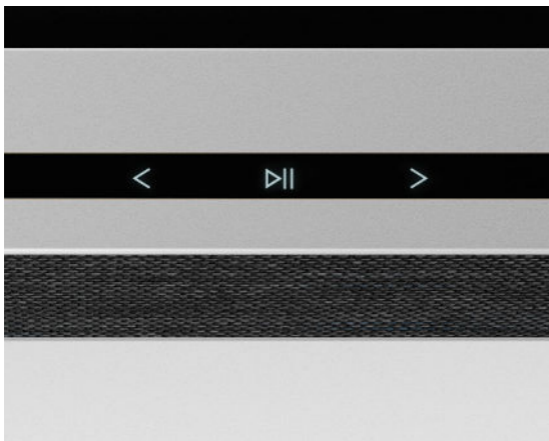


You can find the connection panel underneath the rubber cover for the aluminium charging plug.

If you wish to connect an Ethernet cable or Line-in, simply remove the cover.

You can also connect through the USB-C port.

LIGHT INDICATOR



The light indicator shows the status of the product.

Action	Meaning
White	
Solid	Connected to network, ready for use
Flashing slowly	Starting up
Flashing quickly	Room compensation in progress
Blue	
Solid (5 sec)	Connected/paired
Pulsing	Open for pairing
Red	
Solid	Static error, please call service
Flashing	Transient error, i.e. overheating
Amber	
Solid	No network connection, connection lost
Flashing	Ready for network setup
Pulse	Connecting to network
Green	
Pulsing	Software update in progress

FACTORY RESET



You can restore factory settings by pressing and holding the next and previous buttons on the top plate at the same time. You can let go when the status LED flashes red.

Your speaker will begin the reset process and after approximately one minute, your Beosound Level will be ready for first-time set-up again.

www.on.beo.com/beosound-level-support